



PRESSURE
NEUTEL

NEUTEL
TELEMETRY

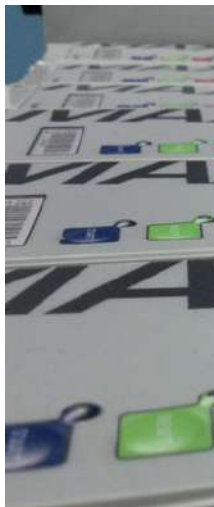
PRESSURE

NEUTEL



The Pressure service monitors operating pressure in the network, or in tanks for stocking and distribution.

The sensors are temperature compensated and will provide very accurate measurements. Patented wireless sensors make installation and maintenance very simple.





Neutel creates
telemetry **solutions**, combining
technology with **platforms**
for data management

For the Water, Oil and Gas sector Neutel offers solutions for remote monitoring of Cathodic Protection and Operating Pressure, at both pressure reduction stations and end points.

Loggers



Data platform



Loggers



HUB



*A gateway unit with IP65 protection rating.
It collects data from multiple sensors: currently available are the XS series for pressure and temperature.
It is a battery powered unit with a primary lithium battery that will last 4-10 years in standard conditions.
HUB relays data to a remote data center over the cell network using GSM/GPRS/2G/3G.
It communicates with wireless sensors over 868MHz radio.
All data is recorded on Flash memory, and relayed to the Futura platform, a dedicated web platform with storage, analysis and reporting functions. The recorded data can be forwarded to third party systems, based on customer requirements. Futura also has a supporting mobile App, to assist field technicians in maintenance operations and management of field units.*



HUB ATEX



A gateway unit with IP65 protection rating.

It collects data from multiple sensors: currently available are the XS series for pressure and temperature.

It is a battery powered unit with a primary lithium battery that will last 4-10 years in standard conditions.

HUB ATEX relays data to a remote data center over the cell network using GSM/GPRS/2G/3G/4G.

It communicates with wireless sensors over 868MHz radio or Bluetooth. All data is recorded on Flash memory, and relayed to the Futura platform, a dedicated web platform with storage, analysis and reporting functions.

The unit may be queried remotely also using IEC-104 protocol. Futura also has a supporting mobile App, to assist field technicians in maintenance operations and management of field units.



XS



Pressure and temperature sensor for wireless installation together with HUB device.

Available in absolute (PA) or relative (PR) measurement and 0.1 to 100 bar range. Operating temperature between -45°C and 85°C. EX certification for installation in hazardous areas.

Used on distribution networks to measure the pressure of gas, water, hydrogen and other fluids. It is powered by an internal battery with an average life of two years.

It communicates with HUB gateway over a wireless radio link, using 868MHz radio.

Available with male 1/4 GAS or NPT threads.

Data is recorded on internal Flash memory and relayed to the Futura remote server through the HUB gateway. The Futura App allows remote maintenance and configuration of units in the field.



La piattaforma



FUTURA

FUTURA is a web platform designed to manage remote monitoring and control of field units installed on critical transport and distribution infrastructure.

It has been optimized for acquisition and intelligent management of all data arriving from the field related to the Cathodic, Pressure, Analysis, Level and Flow solutions.

The field devices are time synchronized: FUTURA collects the data from the field units, aligned to midnight every day.



Maps



Reports



Devices



Dashboard



Charts



Events

The data is presented and filtered in different sections of the website. It may be viewed as tables, graphs or maps, with geolocation of the field units.

The system provides automatic creation of daily reports. Every morning the reports are sent via email, and describe the alerts signaled in the previous 24 hours. Operators can monitor events without needing to log into the website.

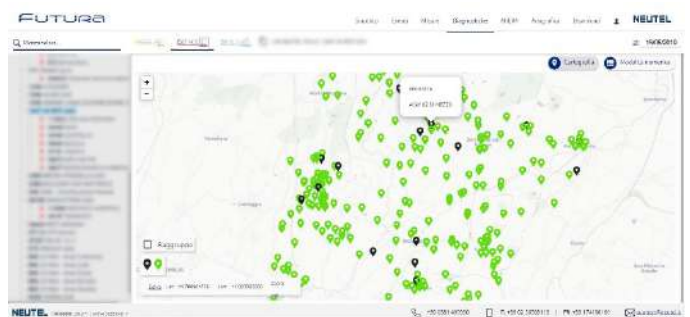
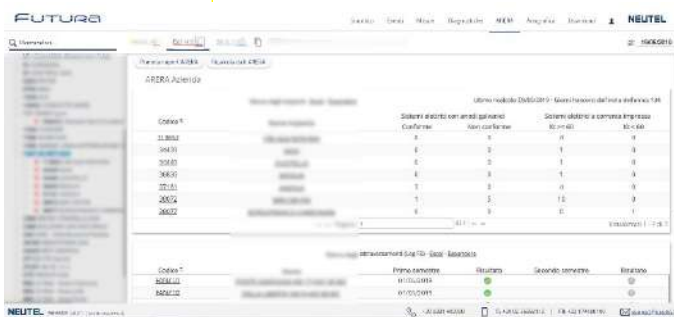
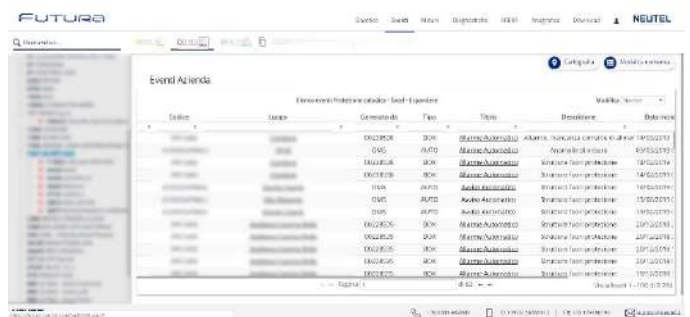
Features

- **Individual accounts and passwords;**
- **Specific management for cathodic protection, pressure monitoring and odorization;**
- **Over limit alarm report;**
- Daily reports on device health;
- Annual reports and custom regulatory reports;
- Batch programming of limit values on field units;
- Multi-column ordering and filtering on the table view;
- High availability: 99.97% service uptime measured daily;
- Frequent updates and new features;
- All data is exportable to the customers servers.

FUTURA is available as a smartphone App. This tool is specifically tailored for field technicians, allowing them to check the status of the company’s networks using a smartphone or tablet.

Events and loggers that are not communicating are easily viewed, as are the most recent alarms, measurements and health check on the field units. Google Maps is also integrated into the app, allowing operators to navigate straight to the inspection site.

Replacement of field units is now easier thanks to a guided procedure that scans the barcode on the loggers.



NEUTEL
TELEMETRY

Neutel Srl

C.so Giacomo Brodolini, 19

27029 Vigevano PV

Italy

www.neutel.com

All information contained in this document is strictly reserved. It is strictly forbidden to distribute, copy, reproduce, represent, adapt, modify, publish, transmit, translate, sell or otherwise dispose of all or part of an element or of the presentation, structure or organization of the material herein, in whatever form and by whatever means, without express written permission from NEUTEL. Any violation of these terms will be treated as a breach of confidence, and exposes the offender to the risk of legal action.

The material contained in this document may be covered by patents, registered or pending, by trademarks, copyright or other forms of protection of intellectual property. The information may change following product development. Futura, Cat, Box, Pin, Dot, Dat, Cathodic are registered trademarks of NEUTEL. Other trademarks may have been registered by their respective owners.

